

# As series CO<sub>2</sub> laser tube



## Technical parameter

Model	Length (mm)	Rated Power (W)	Max. Power (W)	Dia. (mm)	Ignition Voltage (KV)	Working Voltage (KV)	Working Current (mA)	Recommended working current (mA)	Catalyst	Power Stability (%)	Application	Warranty (M)
A0s	600	28	35	Φ80±2	12	8	20	16	yes	≤±5	Engraving,Cutting	6
A1s	1100	75	90	Φ80±2	20	15	22	18	yes	≤±5	Engraving,Cutting	10
A2s	1250	90	100	Φ80±2	25	18	26	21	yes	≤±5	Engraving,Cutting	12
A4s	1450	100	130	Φ80±2	28	19	28	22	yes	≤±5	Engraving,Cutting	12
A6s	1650	130	160	Φ80±2	30	21	30	24	yes	≤±5	Cutting	12
A8s	1850	150	180	Φ80±2	34	22	35	28	yes	≤±5	Cutting	12

## Product performance

# F

ive details  
highlighting professional quality



American II-VI lens  
Customized, Excellent beam mode  
1624436711982780.jpg

Full metal structure for Anode & Cathode ends.

Unique heat dissipation design to largely reduce lens temperature during laser working process.

German Schott tube  
Incoming materials quality control.Stable cavity structure

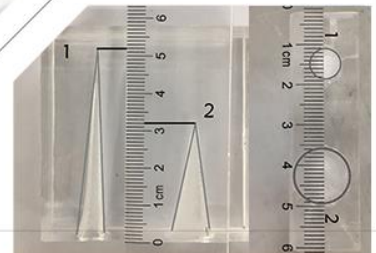


The latest 3rd generation coating techniques.

Upgraded catalytic reduction performance, longer working lifespan, more stable working performance.

Beam convergence

Under the same test conditions, with the new processing techniques, the spot is more rounded and the burning cone is sharper and taller.



## Applications



Advertising processing



Sole upper processing



Packaging processing



Clothing processing



Cloth processing

## Product packaging



### High-Performance

Model	Yongli A2s Co2 Laser Tube
Rated Power	90 W
Peak Power	100 W
Length	1250 mm
Working Current	26 mA
Rmd Working Current	21 mA
Ignition Voltage	25 kV
Working Voltage	18 kV
Outer Diameter	φ80 mm
Working Life	12000 Hours
Catalyst	YES, Islands Structural (Gold) Coating
Warranty	12 Months